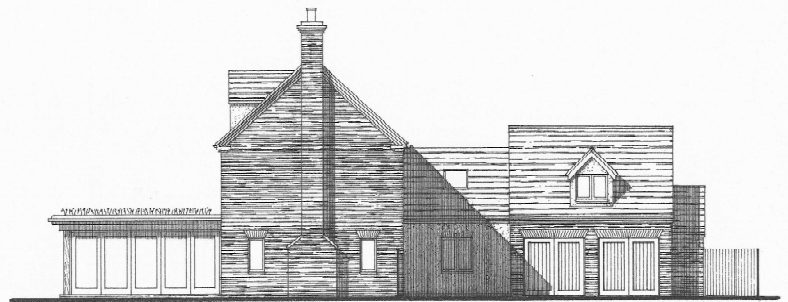


Unit 1



NORTH - EAST ELEVATION



SOUTH - EAST ELEVATION



NORTH - WEST ELEVATION



SOUTH - WEST ELEVATION

Proposed residential redevelopment: land at No 2 Bishop's Road, Trumpington
Unit 1: Elevations - as Proposed
Drawing No 13/828L/16A
1:1000 scale of A2
November 2013
© Graham Handley Architects Ltd



GRAHAM
HANDLEY
ARCHITECTS